

## DOG-FRIENDLY TRAIL

### 1. THE WOOLPACK

This traditional pub near Christchurch Park welcomes dogs in the bar, front patio, & rear garden.

### 2. THE GREYHOUND

With treats on the bar, dogs & their owners can relax indoors or enjoy the outdoor space after a run in nearby Christchurch Park.

### 3. THE ARBOR HOUSE

As well as treats and water, clever pups might be able to persuade their staff to share a morsel from the bar's extensive menu.

### 4. THREE WISE MONKEYS

Dogs are welcomed in the bar area where their owners can enjoy the extensive food options or something refreshing from the drinks menu.

### 5. COSY CLUB

This has a lovely outdoor terrace for warmer days and a cosy bar area upstairs where dogs are made very welcome with bowls of water and treats.

### 6. ARCADE STREET TAVERN

This Georgian town house tavern welcomes dogs at any time to their unique craft beer & gin bar. It has an excellent outside space and a secret courtyard.

### 7. CRAFTY FOX

A cosy corner for a coffee, hot chocolate, a catch-up with friends over craft beers and spirits or something from the tasty menu.

### 8. BRIARBANK

This bar is a haven for dogs & owners alike. Once you've completed your doggy trail card, claim your free doggy bandana here.

## HISTORIC IPSWICH TRAIL

### 1. ISAACS ON THE QUAY

Thomas Wolsey could have been familiar with some of the buildings that make up this fascinating site which today incorporates bars & a coffee shop.

### 2. THE THOMAS WOLSEY

This 17th century building serves an extensive selection of beer, wine & soft drinks. There's a cobbled courtyard surrounded by Tudor buildings.

### 3. HOPSTERS

A great place to enjoy a pint and take home a bottle or two of rare or unusual beer in a lovely timber framed building.

### 4. THE BLACK HORSE INN

The current pub was built in the 16th century. It offers cask ales at very reasonable prices & there's frequently live music.

### 5. COCK AND PYE

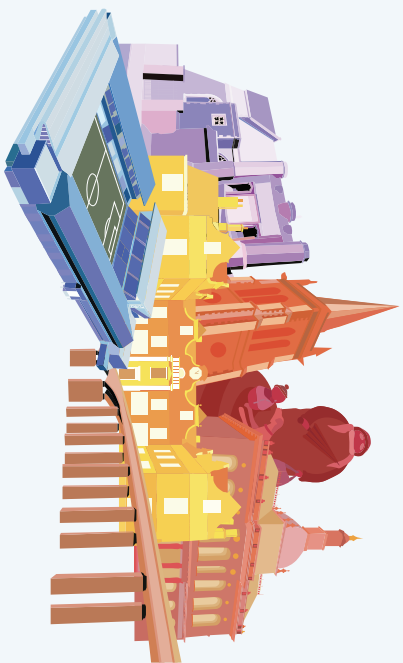
Once a much larger 17th century coaching inn, this pub offers beers, wine & food and has a hidden beer garden.

### 6. THE SHAMROCK

Once renowned as Prices boot shop, today this mid-19th century building is now an Irish pub well known for its excellent Guinness.

### 7. BOOM BATTLE BAR

Boom Battle Bar offers lively surroundings near a historic church and is the place where you can swap your completed heritage trail card for an exclusive pin badge.



Brought to you by



Scan for more information



ALL ABOUT  
SIP'SWICH  
PUB TRAILS





## DOG-FRIENDLY TRAIL

1. The Woolpack
2. The Greyhound
3. The Arbor House
4. Three Wise Monkeys
5. Cosy Club
6. Arcade Street Tavern
7. Crafty Fox
8. Briarbank

## HISTORIC IPSWICH TRAIL

1. Isaacs On The Quay
2. The Thomas Wolsey
3. Hopsters
4. The Black Horse Inn
5. Cock and Pye
6. The Shamrock
7. Boom Battle Bar

### How does it work?

As you buy a drink at each pub or bar on the trail, ask the staff to stamp your card. Any drink qualifies for a stamp. Once you've collected stamps from all venues on a trail, claim your prize as follows:

**Historic Ipswich trail:** Show your completed card at Boom Battle Bar for an enamel pin badge of Wolsey's gate.

**Dog-friendly trail:** Visit Briarbank to receive a dog bandana featuring Ipswich landmarks.

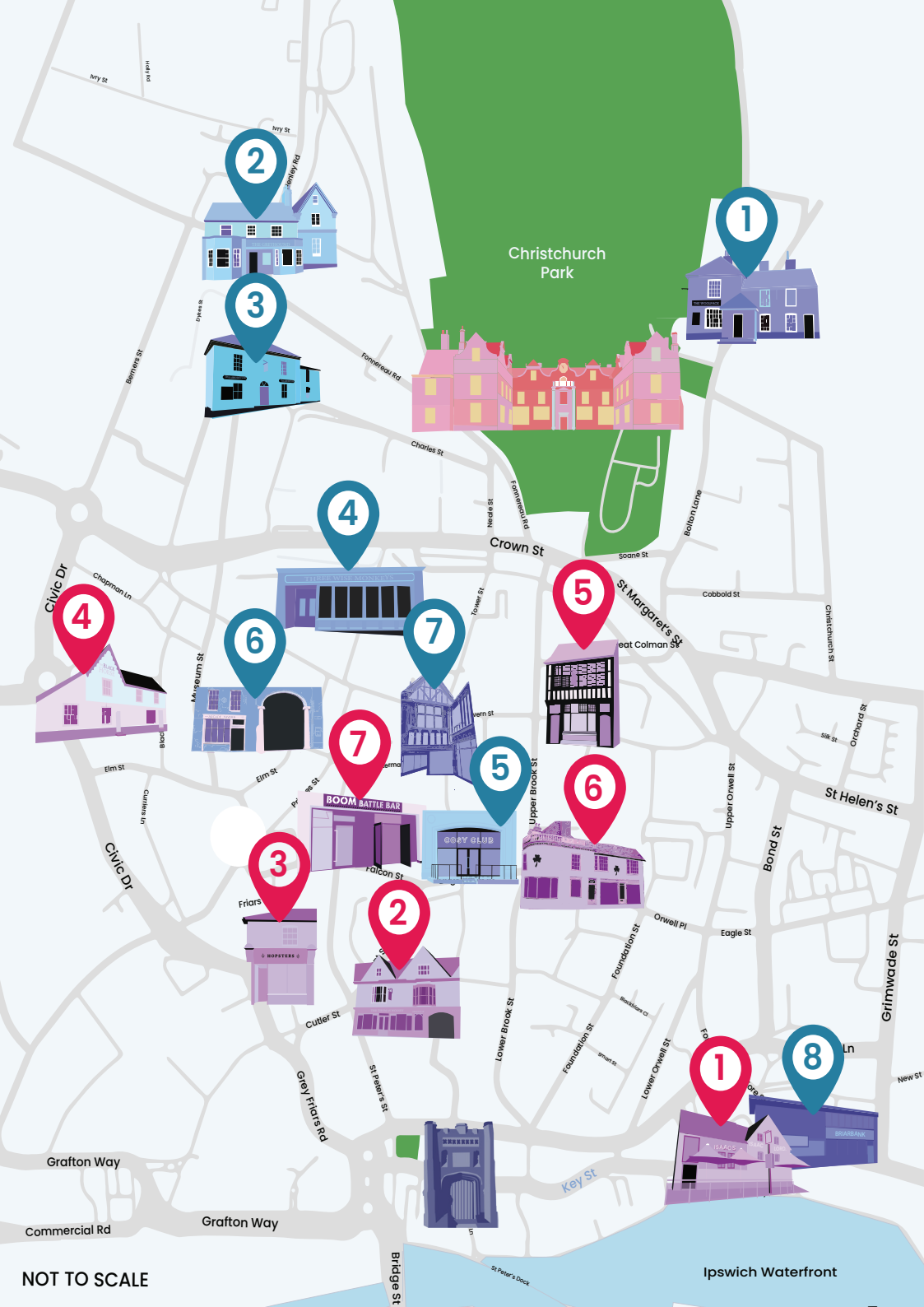
Complete both trails and swap your card at Briarbank for a reusable coffee cup featuring Wolsey's gate (while stocks last).

Share your photos on social media with #SipSwich and remember to tag in @AllAboutIpswich.

For full terms and conditions check out [www.allaboutipswich.com/SipSwich](http://www.allaboutipswich.com/SipSwich)

Hurry – the trail ends in April 2025 (or when all the trail prizes have been claimed)

To find out more about shopping, places to visit, offers and events in Ipswich visit [www.allaboutipswich.com](http://www.allaboutipswich.com)



NOT TO SCALE